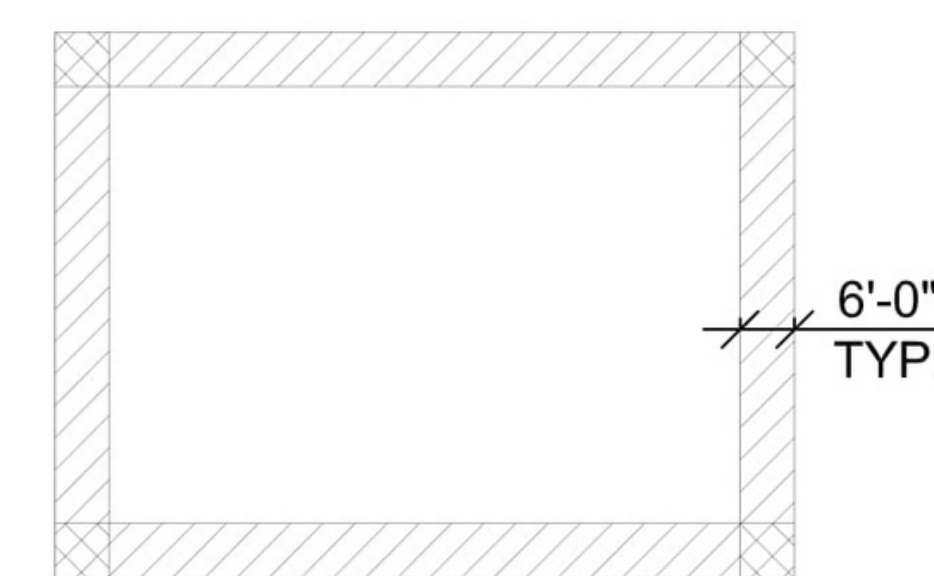


ROOF JOIST ERECTION PLAN (OUTPARCEL #2 BUILDING)

REF. S2.1 (OUTPARCEL #2 BUILDING)

PLAN NOTES:

1. THE TAG END OF THE JOIST IS THE END AT WHICH THE PIECE MARK IS LOCATED.
2. REFERENCE DWG J1 FOR LEGEND, SYMBOLS & ABBREVIATIONS.
3. FOR JOIST SECTIONS SEE J4.
4. ALL JOIST & BRIDGING WILL BE PAINTED WITH ONE COAT OF SJI STANDARD GRAY DIP PRIMER.
5. FOR SP-J1 LOADING SEE LOADING DIAGRAM ON THIS SHEET.
6. DEFLECTION: TL = L/360



NET UPLIFT DIAGRAM

REF. : S5.1 #2 BUILDING

NET UPLIFT VALUE :

TRIBUTARY AREA	ZONE - 1	ZONE - 2	ZONE - 3
10 SQ FT	-24.2 PSF	-43.9 PSF	-68.6 PS0F
20 SQ FT	-23.9 PSF	-39.0 PSF	-56.3 PSF
50 SQ FT	-22.9 PSF	-31.6 PSF	-39.0 PSF
100 SQ FT	-21.7 PSF	-26.6 PSF	-26.6 PSF

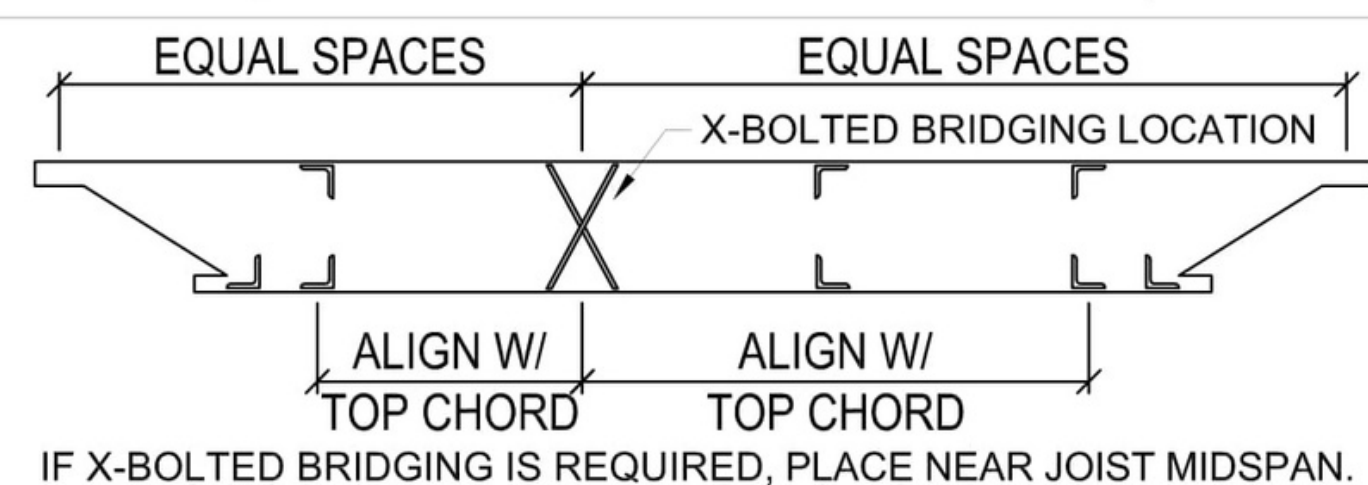
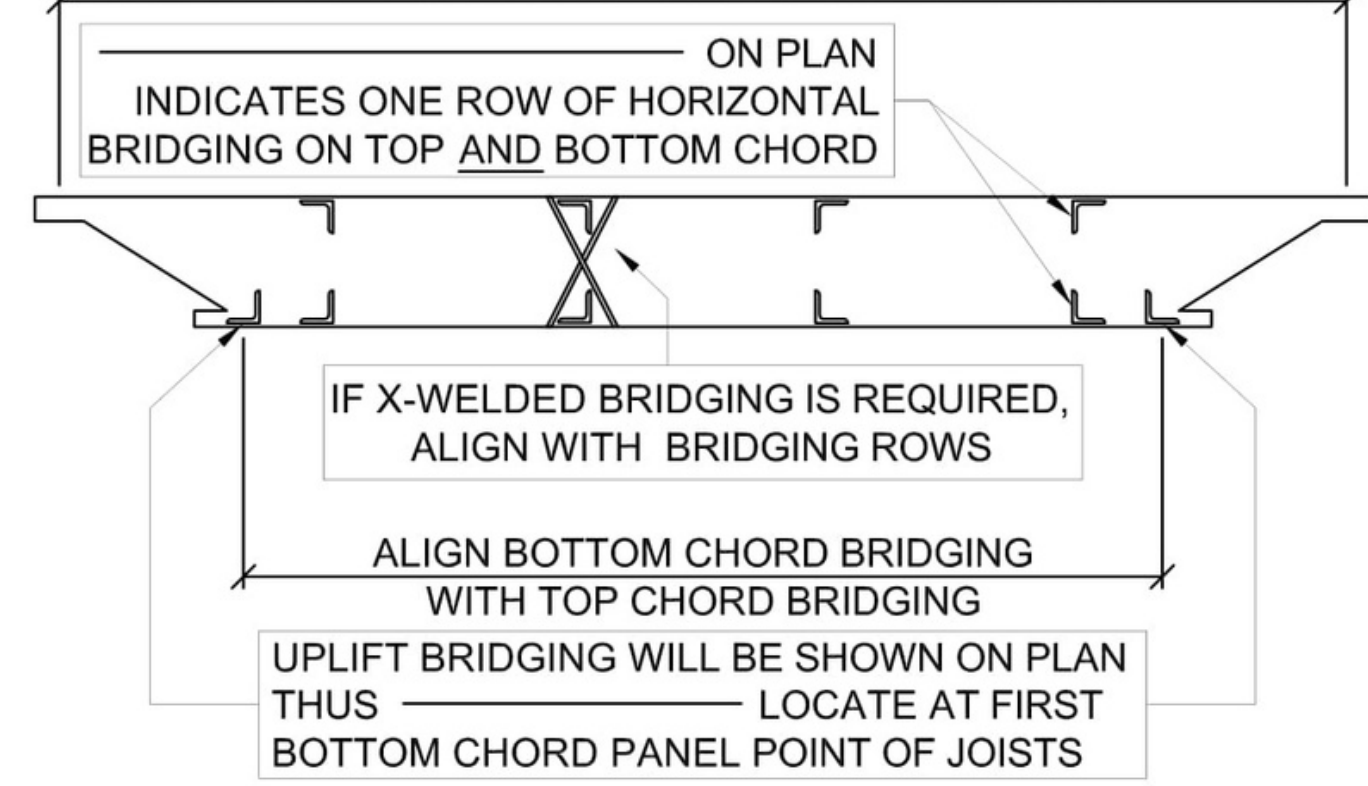
NET UPLIFT = GROSS UPLIFT - DEAD LOAD (5 PSF)

JOIST LOADING		
MARK	LOADING DIAGRAM	
18K4 SP-J1		
	MARK	CONC. LOAD (LBS)
18K4 SP-J1	500	240

BRIDGING LEGEND WITH ANGLE SIZE

- 400 - 799 = WELDED-X BRIDGING. IDENTIFIED ON PLACEMENT PLAN
 WELDED-X BRIDGING • L 1 x1 x0.109
- H# = CONTINUOUS ROW OF HORIZONTAL BRIDGING AT TOP AND BOTTOM CHORD, IDENTIFIED BY MARKS H1 - H6 ON PLACEMENT PLAN. REFERENCE TYPICAL BRIDGING SPACING DETAIL ON EACH PLACEMENT PLAN FOR SPACING REQUIREMENTS, UNLESS SPECIFIC LOCATIONS ARE SHOWN.
 - H2 = L 1 1/4x1 1/4x0.109
- H# = CONTINUOUS ROW OF HORIZONTAL UPLIFT BRIDGING INSTALLED AT FIRST BOTTOM CHORD PANEL POINT, IDENTIFIED ON PLAN BY H1 - H6 (REFERENCE TYPICAL BRIDGING SPACING DETAIL ON ROOF PLACEMENT PLANS)
 - H2= L 1 1/4x1 1/4x0.109

SPACE TOP CHORD BRIDGING EQUALLY BETWEEN SUPPORTS

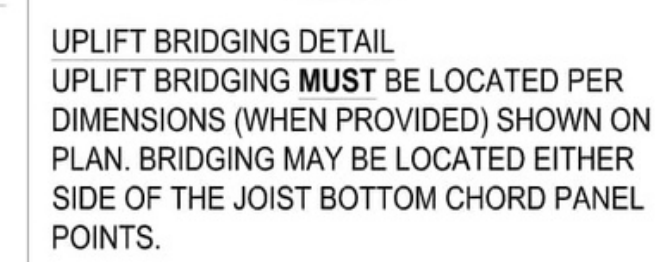


TYPICAL BRIDGING SPACING (W/ UPLIFT)

NOTE: BRIDGING ROW QUANTITY'S WILL VARY.
 (SEE JOIST ERECTION PLANS FOR BRIDGING ROW REQUIREMENTS.)
 N.T.S.

ADDITIONAL BRIDGING DUE TO UPLIFT

A SINGLE ROW OF HORIZONTAL BRIDGING LOCATED @ THE FIRST BOTTOM CHORD PANEL POINT @ EACH END. TYP. @ EACH JOIST SHOWN ON PLAN. THE UPLIFT BRIDGING SIZE IS THE SAME AS THE REGULAR BRIDGING SIZE FOR THAT BAY.



FOR FIELD USE



A Fabricator's Friend